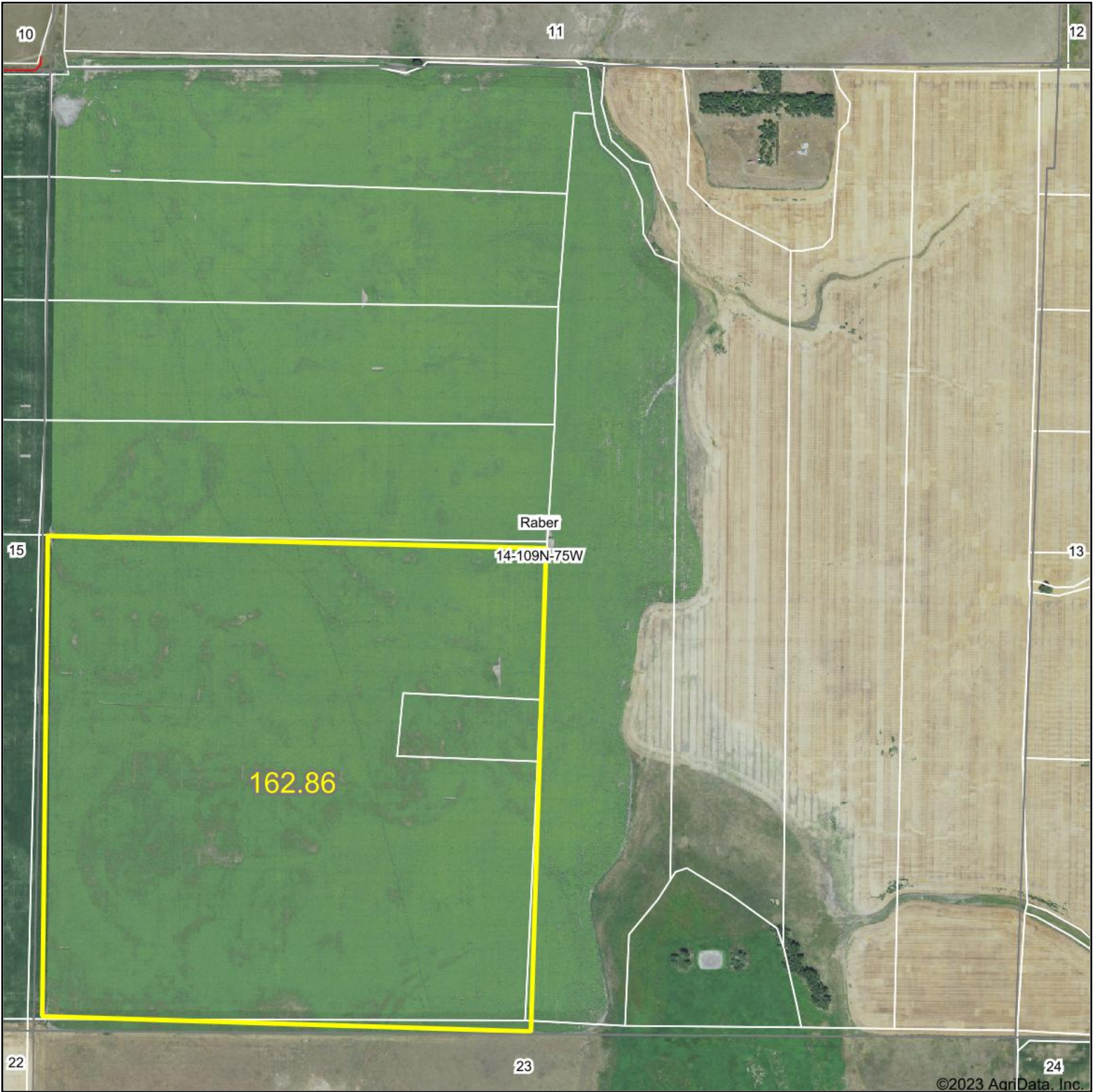


# Aerial Map



Boundary Center: 44° 14' 26.44, -99° 49' 16.65



  
**Dakota Land Co.**  
Schuetzle Real Estate & Auction Firm

**14-109N-75W**  
**Hughes County**  
**South Dakota**



Maps Provided By:  
  
CUSTOMIZED ONLINE MAPPING  
© AgriData, Inc. 2023 www.AgriDataInc.com

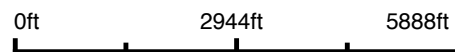
10/14/2023

Field borders provided by Farm Service Agency as of 5/21/2008.

# Aerial Map



Boundary Center: 44° 14' 26.56, -99° 49' 16.99



  
**Dakota Land Co.**  
Schuetzle Real Estate & Auction Firm

**14-109N-75W**  
**Hughes County**  
**South Dakota**

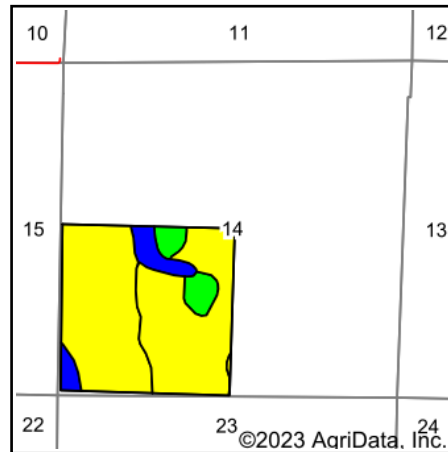
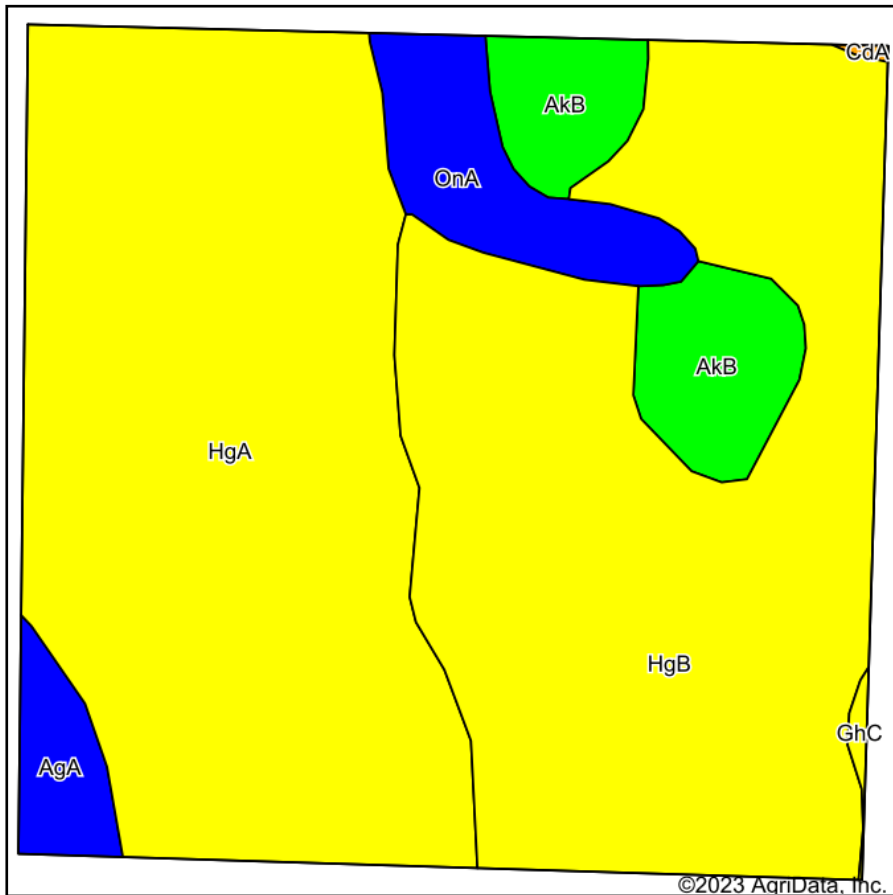


Maps Provided By:  
  
CUSTOMIZED ONLINE MAPPING  
© AgriData, Inc. 2023      www.AgriDataInc.com

11/22/2023

Field borders provided by Farm Service Agency as of 5/21/2008.

# Soils Map



State: **South Dakota**  
 County: **Hughes**  
 Location: **14-109N-75W**  
 Township: **Raber**  
 Acres: **162.86**  
 Date: **10/14/2023**

  
**Dakota Land Co.**  
 Schuetzle Real Estate & Auction Firm

Maps Provided By:  
  
 © AgriData, Inc. 2023 [www.AgriDataInc.com](http://www.AgriDataInc.com)



Soils data provided by USDA and NRCS.

Area Symbol: SD065, Soil Area Version: 27														
Code	Soil Description	Acres	Percent of field	PI Legend	Non-Irr Class *c	Productivity Index	Alfalfa hay Tons	Bromegrass alfalfa AUM	Corn Bu	Grain sorghum Bu	Oats Bu	Spring wheat Bu	Winter wheat Bu	*n NCCPI Small Grains
HgA	Highmore-DeGrey silt loams, 0 to 2 percent slopes	71.36	43.8%		IIc	76								29
HgB	Highmore-DeGrey silt loams, 2 to 6 percent slopes	67.71	41.6%		IIe	73								29
AkB	Agar-Eakin silt loams, 2 to 5 percent slopes	11.16	6.9%		IIe	85	2	3.3	44	51	56	25	30	34
OnA	Mobridge silt loam, 0 to 2 percent slopes	8.35	5.1%		IIc	94								36
AgA	Agar silt loam, 0 to 2 percent slopes	3.75	2.3%		IIc	92								32
GhC	Glenham-Highmore silt loams, 5 to 9 percent slopes	0.40	0.2%		IIIe	62	1.9	3.1	31	36	46	22	29	33
CdA	Cavo-Demky silt loams, 0 to 2 percent slopes	0.13	0.1%		IVs	57	1.2	2		21	30	15		26
<b>Weighted Average</b>					<b>2.00</b>	<b>76.6</b>	<b>0.1</b>	<b>0.2</b>	<b>3.1</b>	<b>3.6</b>	<b>4</b>	<b>1.8</b>	<b>2.1</b>	<b>*n 29.8</b>

\*n: The aggregation method is "Weighted Average using all components"

\*c: Using Capabilities Class Dominant Condition Aggregation Method

Soils data provided by USDA and NRCS.