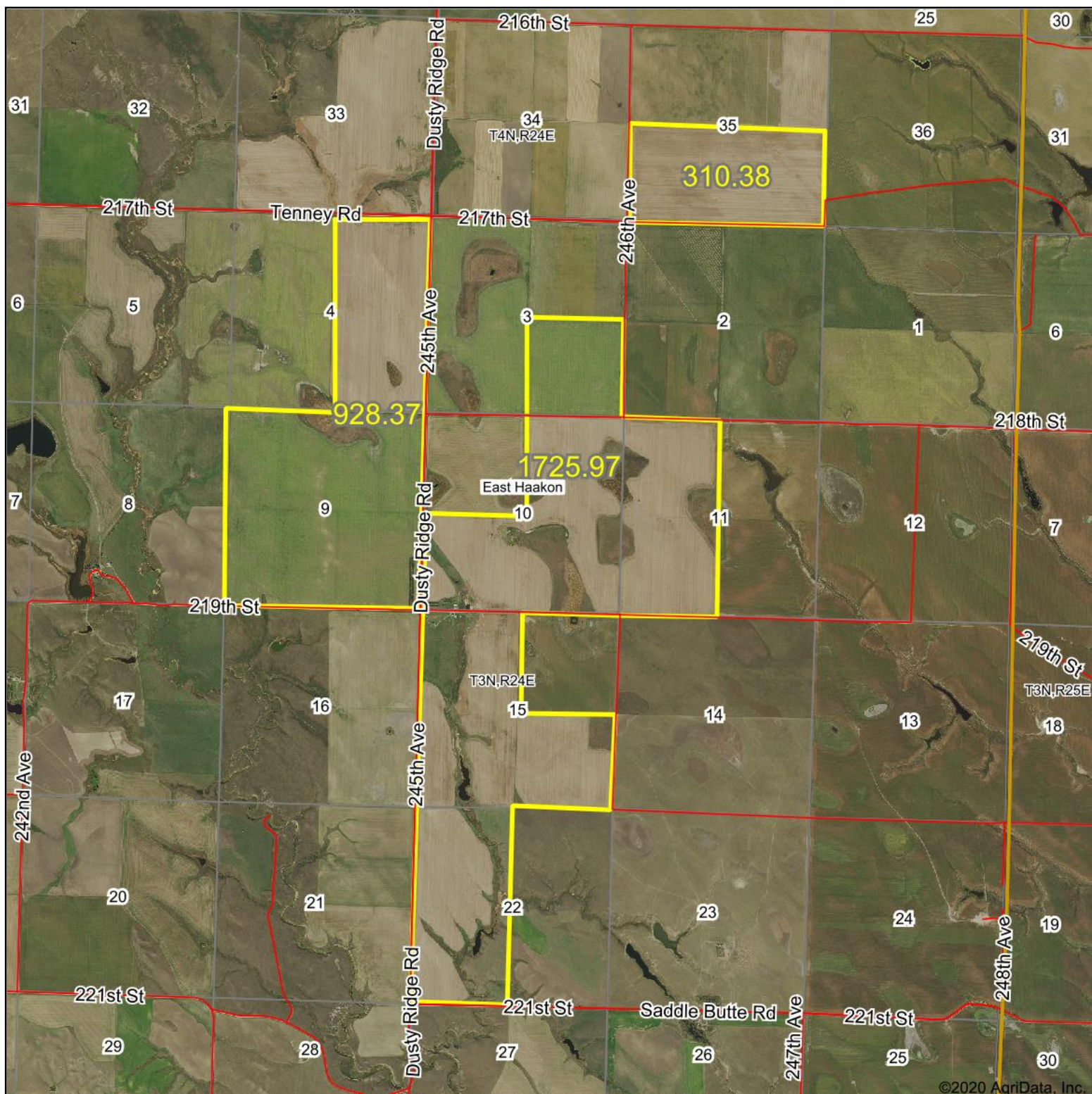
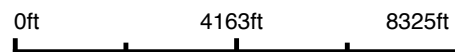


# Aerial Map



©2020 AgriData, Inc.

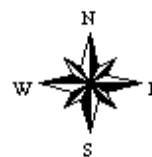
Map Center: 44° 13' 50.93, -101° 12' 50.89



  
**Dakota Land Co.**  
 Schuetzle Real Estate & Auction Firm

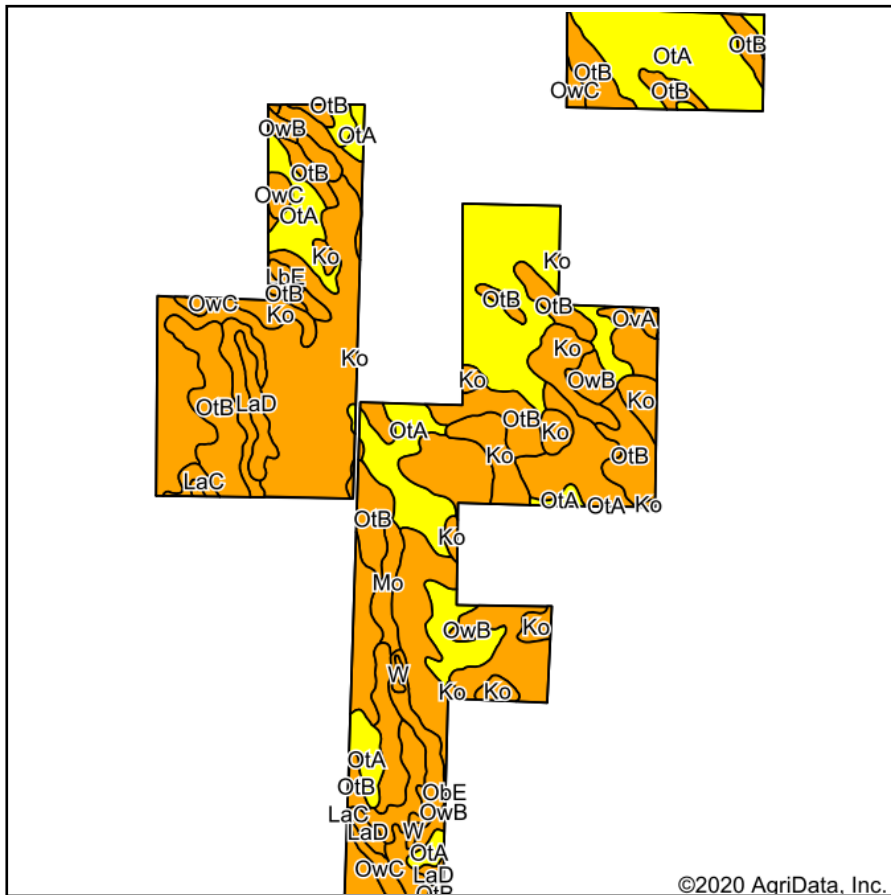
**10-3N-24E**  
**Haakon County**  
**South Dakota**

Maps Provided By:  
  
 CUSTOMIZED ONLINE MAPPING  
 © AgriData, Inc. 2020      www.AgridataInc.com

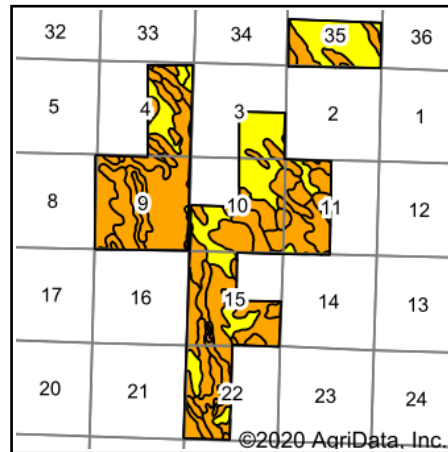


7/30/2020

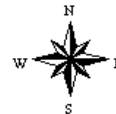
# Soils Map



Soils data provided by USDA and NRCS.

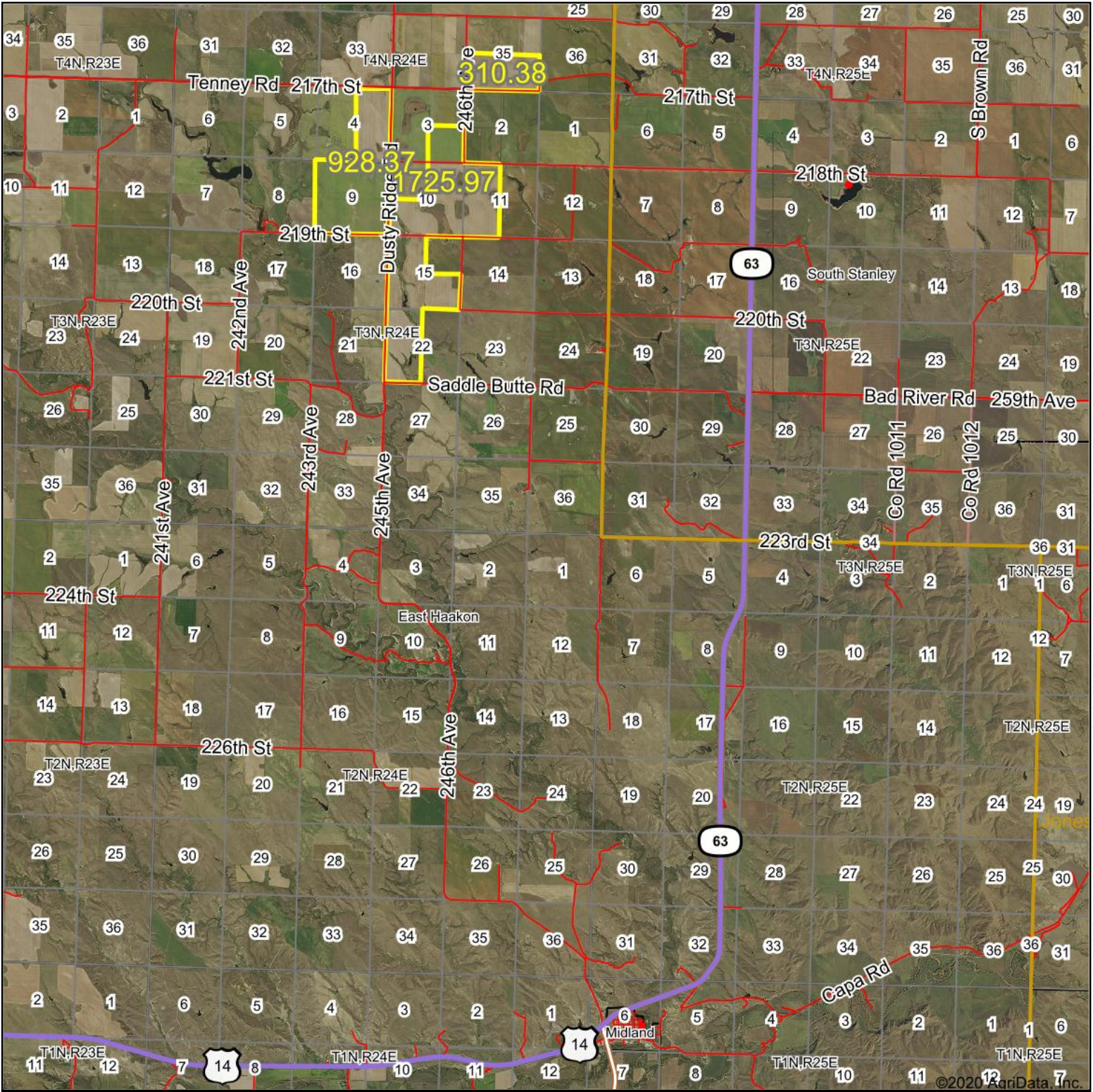


State: **South Dakota**  
 County: **Haakon**  
 Location: **10-3N-24E**  
 Township: **East Haakon**  
 Acres: **2964.72**  
 Date: **7/30/2020**

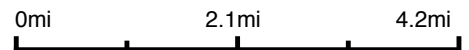


Area Symbol: SD055. Soil Area Version: 23														
Code	Soil Description	Acres	Percent of field	PI Legend	Non-Irr Class *c	Irr Class *c	Productivity Index	Alfalfa hay	Cool season grasses	Grain sorghum	Oats	Spring wheat	Winter wheat	*n NCCPI Small Grains
OwB	Ottumwa-Lakoma complex, 3 to 6 percent slopes	951.96	32.1%		IIIe	IIIe	55							17
OtA	Ottumwa silty clay, 0 to 3 percent slopes	783.66	26.4%		IIIs		61	1.5	2.5	44	45	25	38	18
OtB	Ottumwa silty clay, 3 to 6 percent slopes	581.38	19.6%		IIIe		57	1.5	2.4	42	42	23	36	18
Ko	Kolls clay	243.76	8.2%		Vw	Vw	30							4
WsE	Wendte, channeled-Sansarc complex, 0 to 60 percent slopes	79.03	2.7%		VIw		19							7
Mo	Mosher silt loam	78.35	2.6%		IVs		32	1.1	1.8	20	27	13	18	19
LaC	Lakoma silty clay, 6 to 9 percent slopes	71.70	2.4%		VIe	VIe	45							16
LaD	Lakoma silty clay, 6 to 15 percent slopes	55.65	1.9%		VIe	VIe	43							16
OwC	Ottumwa-Lakoma silty clays, 6 to 9 percent slopes	45.04	1.5%		IVe	IVe	45							16
LbE	Lakoma-Vivian complex, 9 to 25 percent slopes	25.25	0.9%		VIe	VIe	39							15
OvA	Ottumwa-Capa complex, 0 to 3 percent slopes	15.87	0.5%		IIIs		46							17
PrA	Promise clay, 0 to 3 percent slopes	13.44	0.5%		IIIs	IIIs	68							14
Bu	Bullcreek clay, 0 to 6 percent slopes	10.86	0.4%		VIs	VIs	13							14
W	Water	8.27	0.3%		VIII		0							

# Aerial Map

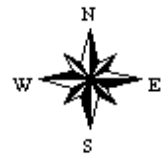


Map Center: 44° 9' 57.27, -101° 10' 53.87



**Dakota Land Co.**  
Schuetzle Real Estate & Auction Firm

**1-2N-24E**  
**Haakon County**  
**South Dakota**



7/30/2020

Maps Provided By:  
**surety**  
CUSTOMIZED ONLINE MAPPING  
© AgriData, Inc. 2020 www.AgridataInc.com