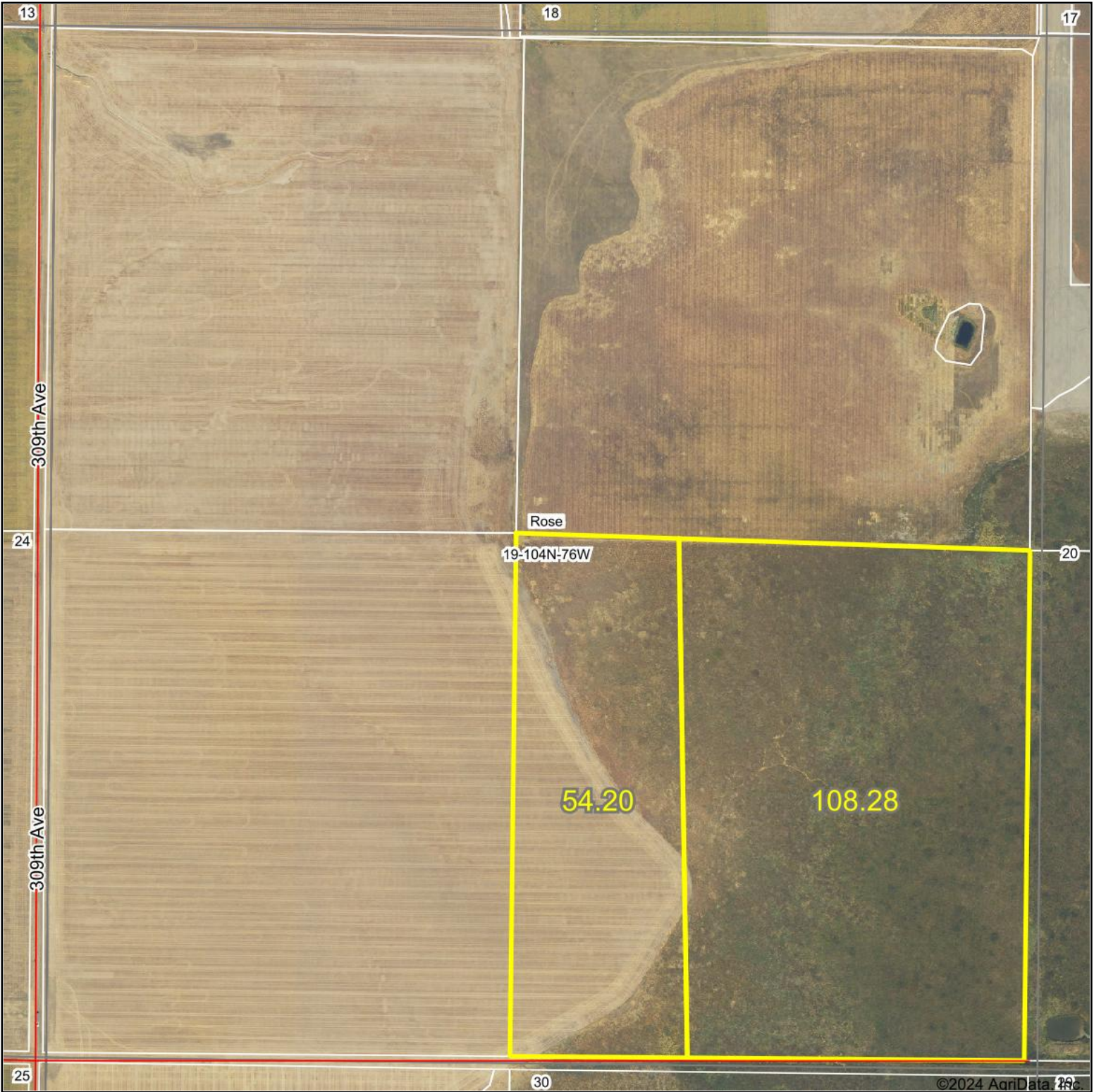
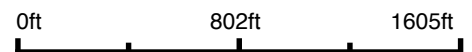


Aerial Map



Boundary Center: 43° 47' 35.68, -99° 58' 0.85




Dakota Land Co.
Schuetzle Real Estate & Auction Firm

19-104N-76W
Lyman County
South Dakota



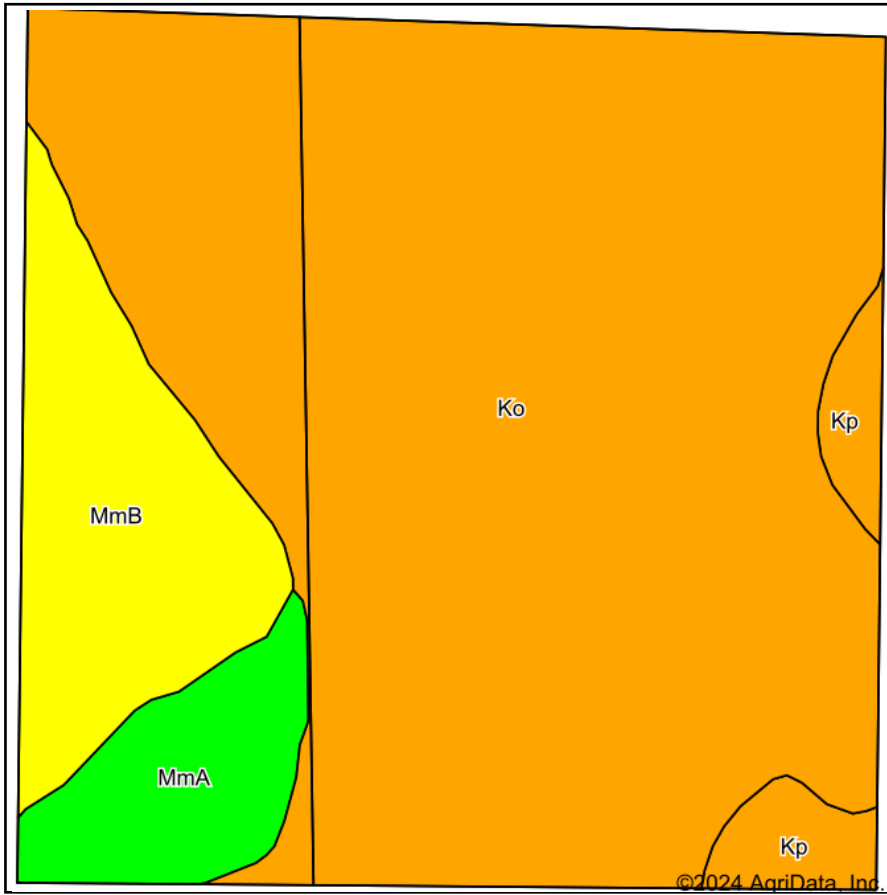
Maps Provided By:

CUSTOMIZED ONLINE MAPPING
© AgriData, Inc. 2023 www.AgriDataInc.com

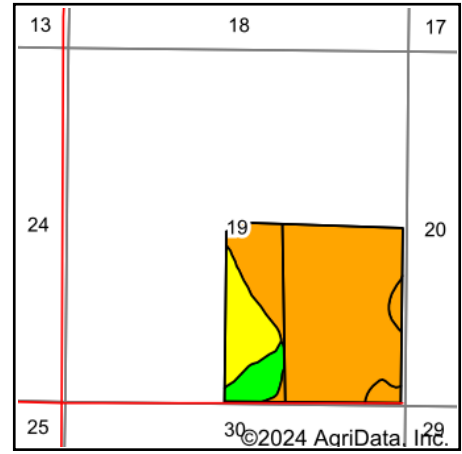
10/18/2024

Field borders provided by Farm Service Agency as of 5/21/2008.

Soils Map



Soils data provided by USDA and NRCS.



State: **South Dakota**
 County: **Lyman**
 Location: **19-104N-76W**
 Township: **Rose**
 Acres: **162.48**
 Date: **10/18/2024**



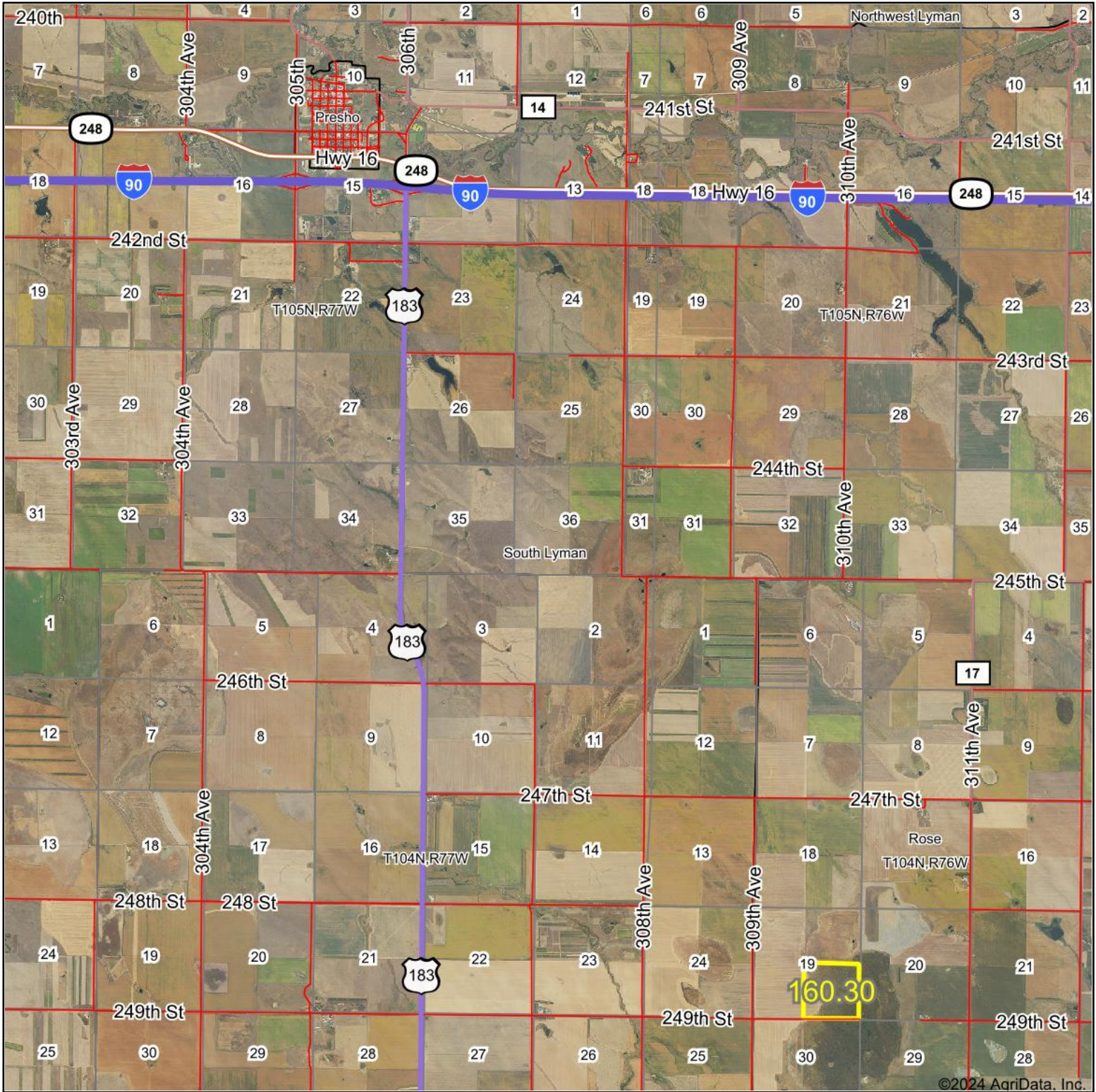
Area Symbol: SD085, Soil Area Version: 24

Code	Soil Description	Acres	Percent of field	PI Legend	Non-Irr Class *c	Irr Class *c	Productivity Index	*n NCCPI Small Grains
Ko	Kolls silty clay	125.35	77.1%		Vw	Vw	30	7
MmB	Millboro silty clay, 3 to 6 percent slopes	20.89	12.9%		IIIe	IIIe	79	29
MmA	Millboro silty clay, 0 to 3 percent slopes	10.55	6.5%		IIIs	IIIs	85	33
Kp	Kolls silty clay, ponded	5.69	3.5%		VIIIw	VIIIw	5	6
Weighted Average					4.72	4.72	39	*n 11.5

*n: The aggregation method is "Weighted Average using all components"

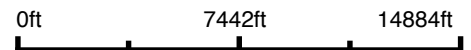
*c: Using Capabilities Class Dominant Condition Aggregation Method

Aerial Map



©2024 AgriData, Inc.

Boundary Center: 43° 47' 35.72, -99° 58' 0.88




Dakota Land Co.
Schuetzle Real Estate & Auction Firm

19-104N-76W
Lyman County
South Dakota



Maps Provided By:

CUSTOMIZED ONLINE MAPPING
© AgriData, Inc. 2023 www.AgriDataInc.com

10/18/2024

Field borders provided by Farm Service Agency as of 5/21/2008.