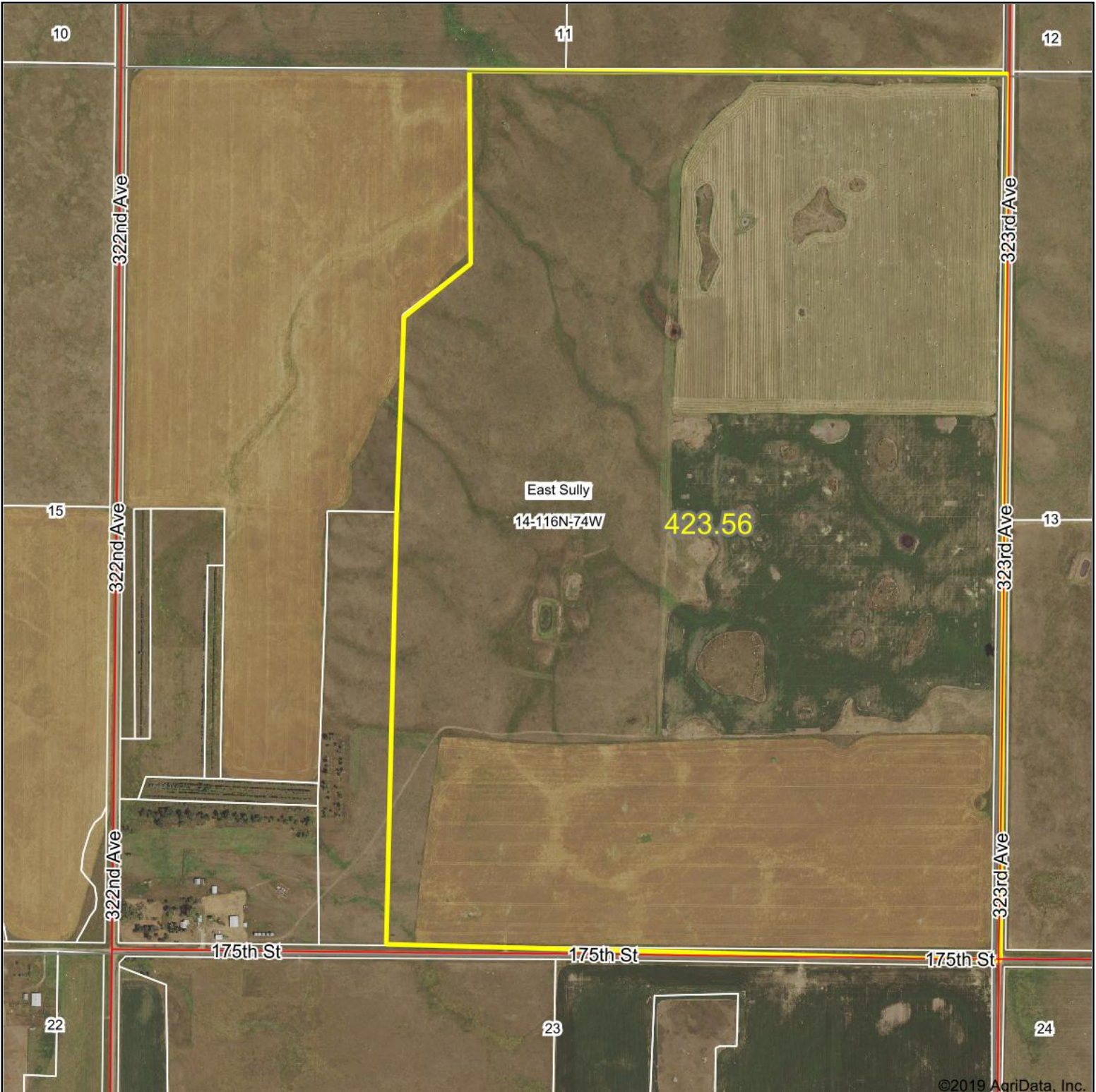
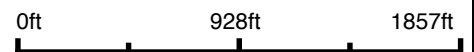


Aerial Map



Map Center: 44° 51' 32.79, -99° 42' 18.98




Dakota Land Co.
Schuetzle Real Estate & Auction Firm

14-116N-74W
Sully County
South Dakota



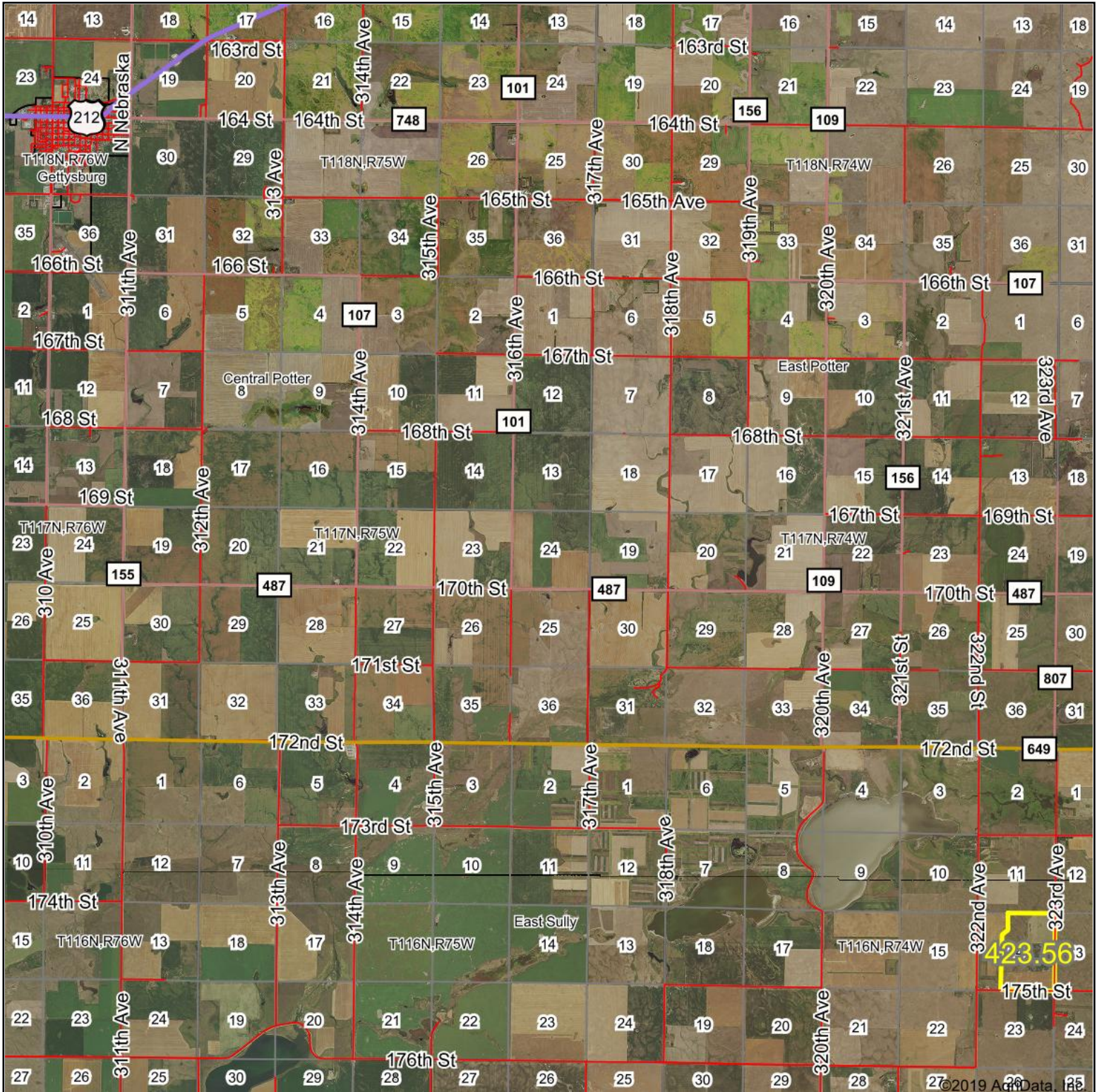
2/5/2020

Maps Provided By:

CUSTOMIZED ONLINE MAPPING
© AgriData, Inc. 2019 www.AgriDataInc.com

Field borders provided by Farm Service Agency as of 5/21/2008.

Aerial Map



Map Center: 44° 56' 2.84, -99° 49' 42.07



Dakota Land Co.
Schuetzle Real Estate & Auction Firm

24-117N-75W
Potter County
South Dakota

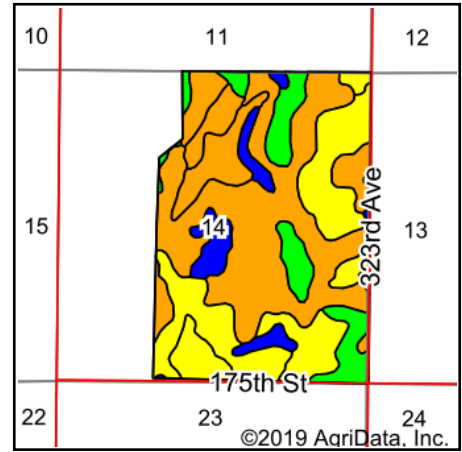
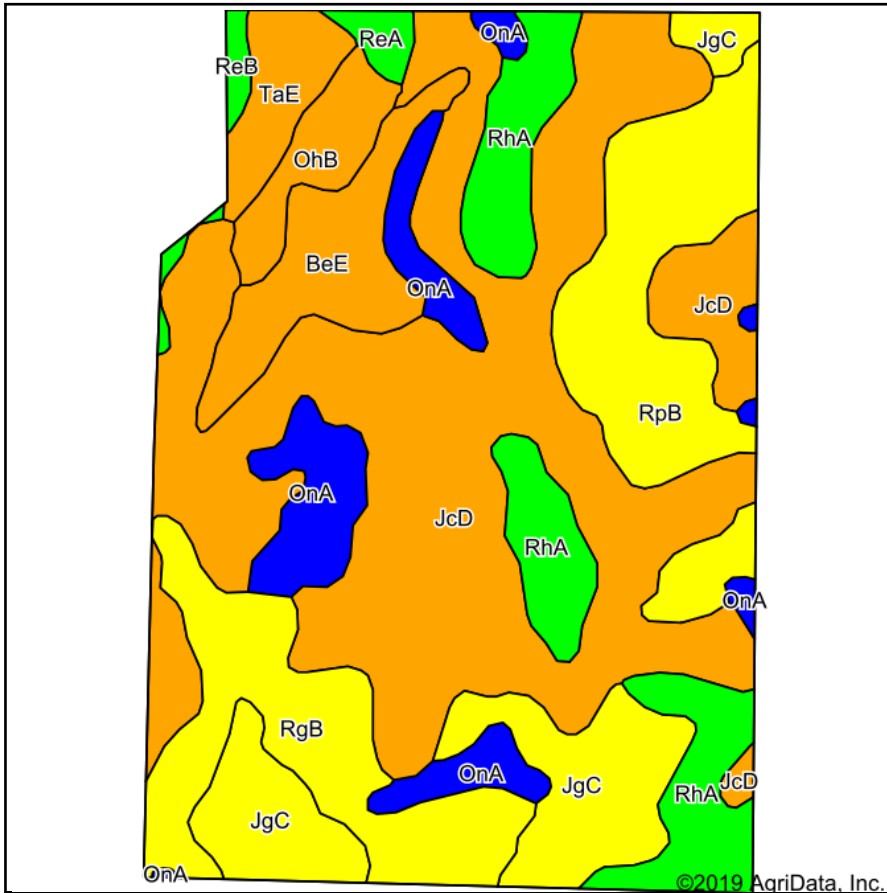
Maps Provided By:
surety
CUSTOMIZED ONLINE MAPPING
© AgriData, Inc. 2019 www.AgriDataInc.com



2/5/2020

Field borders provided by Farm Service Agency as of 5/21/2008.

Soils Map



State: **South Dakota**
 County: **Sully**
 Location: **14-116N-74W**
 Township: **East Sully**
 Acres: **423.56**
 Date: **2/5/2020**


Dakota Land Co.
 Schuetzle Real Estate & Auction Firm

Maps Provided By:

 CUSTOMIZED ONLINE MAPPING
 © AgriData, Inc. 2019 www.AgriDataInc.com



Soils data provided by USDA and NRCS.

Area Symbol: SD119. Soil Area Version: 22

Code	Soil Description	Acres	Percent of field	PI Legend	Non-Irr Class *c	Productivity Index	Alfalfa hay	Bromegrass alfalfa	Cool season grasses	Cor n	Grain sorghum	Oat s	Spring wheat	Winter wheat	*n NCCPI Soybeans
JcD	Java-Betts stony complex, 3 to 12 percent slopes	174.07	41.1%		Vlls	24	1.5	2.5		22	22	37	17		45
RpB	Raber-Peno loams, 2 to 6 percent slopes	46.45	11.0%		lle	65									51
RgB	Eakin-Raber complex, 2 to 6 percent slopes	41.48	9.8%		lle	76									54
JgC	Java-Glenham loams, 3 to 9 percent slopes	41.20	9.7%		IVe	63	1.5	2.5		22	22	37	17		54
RhA	Eakin-Raber complex, 0 to 2 percent slopes	40.54	9.6%		llc	83									55
OnA	Mobridge silt loam, 0 to 2 percent slopes	28.02	6.6%		llc	94									62
BeE	Betts loam, 6 to 25 percent slopes	22.72	5.4%		Vle	23									41
OhB	Oahe-Talmo loams, 2 to 6 percent slopes	11.43	2.7%		llle	38	1.1		1.8	28	29	41	19		31
TaE	Talmo gravelly loam, 9 to 25 percent slopes	11.38	2.7%		Vls	9									20
ReA	Ree loam, 0 to 2 percent slopes	3.21	0.8%		llc	85	1.9	3.2		39	48	57	25	35	49
ReB	Ree loam, 2 to 5 percent slopes	3.06	0.7%		lle	80	1.8	3		36	45	55	23	33	48