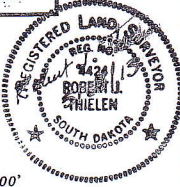




**PLAT OF  
LOTS 3A, 3B, 3C, 3D & 3E  
A SUBDIVISION OF LOT 3,  
ROBINSON ACRES  
NW1/4 of Section 29,  
Township 112 North, Range 80 West  
HUGHES COUNTY, SOUTH DAKOTA**

CURVE	RADIUS	ARC LENGTH	CHORD LENGTH	CHORD BEARING
C1	70.00'	37.72'	37.26'	N 43°02'59" E
C2	70.00'	143.83'	119.83'	S 62°39'06" E
C3	70.00'	72.94'	69.69'	S 26°03'49" W
C4	70.00'	116.61'	103.58'	N 76°21'43" W

ACCESS APPROVAL  
Access from 200th St. as shown hereon  
is approved.  
*[Signature]*  
HUGHES CO. HWY. SUPERINTENDENT

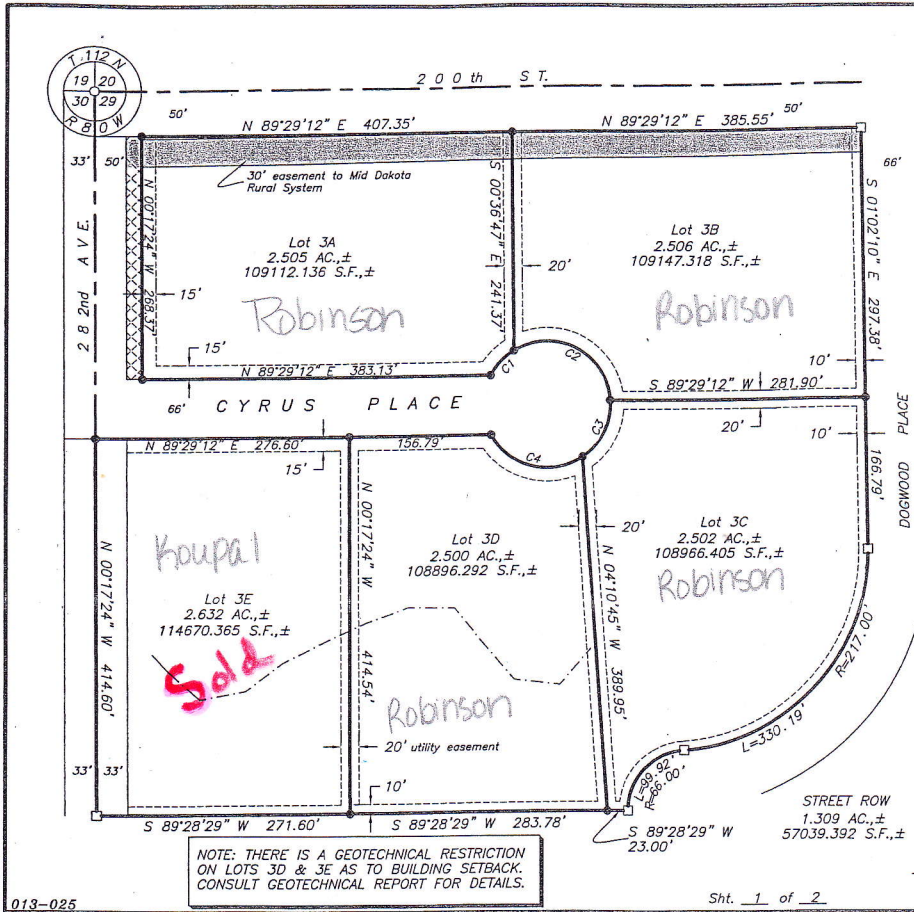


BEARINGS ARE GPS GRID

SCALE: 1"=100'

**LEGEND**

- Denotes 5/8" rebar w/cap #4424
- Denotes 5/8" rebar w/cap #6118
- Denotes utility easement, width variable
- ⊠ Denotes additional 17' dedicated as road right of way.
- - - - - Approximate location of Geotechnical Reference line



**NOTE: THERE IS A GEOTECHNICAL RESTRICTION ON LOTS 3D & 3E AS TO BUILDING SETBACK. CONSULT GEOTECHNICAL REPORT FOR DETAILS.**